



**WITNEY**  
TOWN COUNCIL



# Consultation

**Proposed Funding for Improvements to  
West Witney Clubhouse and  
Building a New Town Council Depot**

# What is planned and why is it needed?

Witney Town Council has responded to the need for improved infrastructure to support its sports facilities at West Witney Sports Ground.

**West Witney Clubhouse refurbishment** and **new works depot** to a high standard will incorporate:

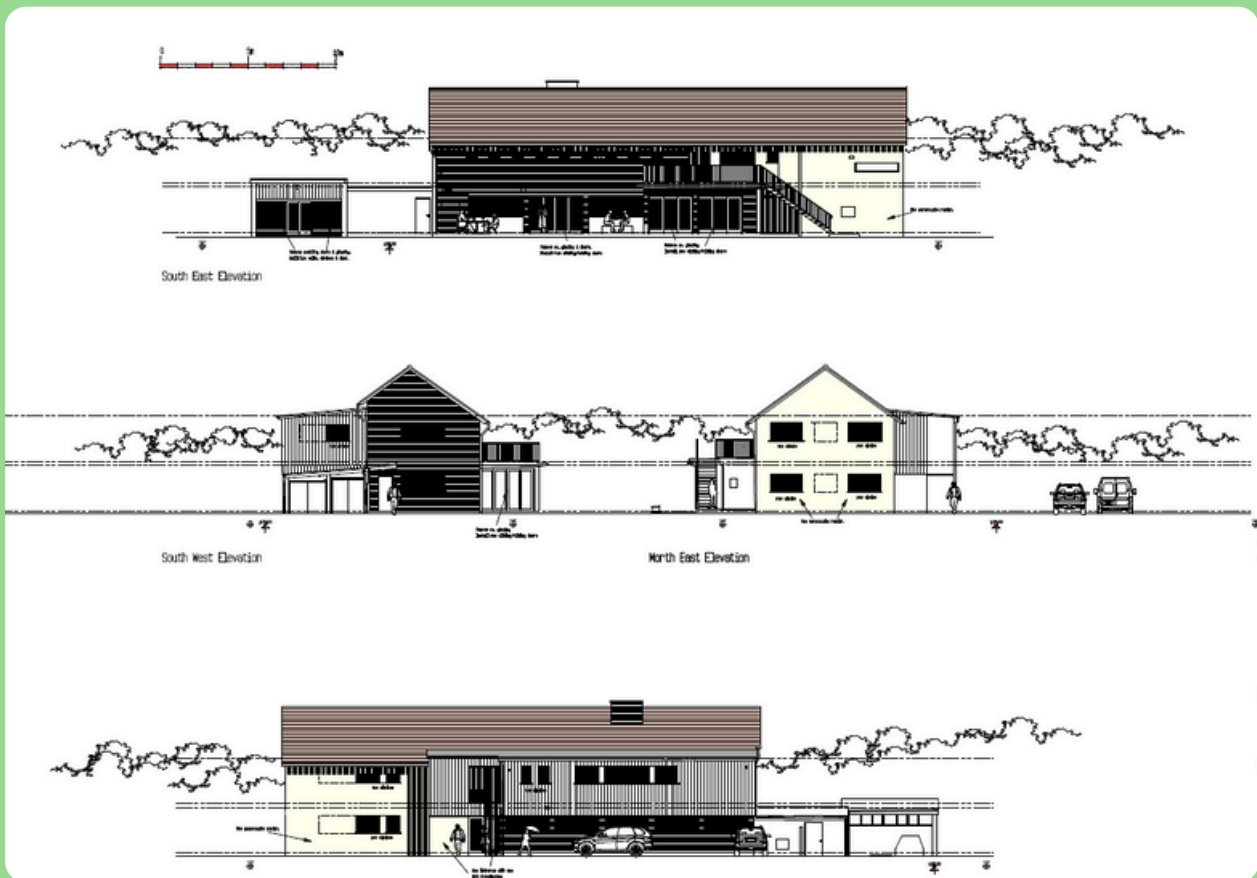
- Remodelled **changing rooms and showers** to comply with safeguarding regulations.
- **New, accessible function rooms** and community spaces
- **Energy-efficient upgrades**, including a new boiler, windows, doors and cladding.
- **Full disabled access** for all users

At the same time, a modern works depot will be built at the West Witney site replacing the former Leys depot which now forms part of the The Leys hub which is currently under going construction by our partners Courtside at The Leys

## More information

You can find out more information about the history, background and support for this project on our website

[\*\*link here\*\*](#)



## Plans for the New Clubhouse



## Plans for the New Depot

## How will it be funded?

The Council has budgeted £1,850,000 for the capital works. The Council's financial planning for funding the project has taken place over several years. £600,000 will be funded from reserves and developer funding. The remaining £1,250,000 will be funded through a loan, which the Council has previously agreed in principle. To facilitate this it has already budgeted for the loan repayments, over a 40-year period, from within the Council Tax residents are already charged.

Councils are able to obtain loans at favourable rates. By taking out a loan, the costs of creating or enhancing an asset can be distributed over its lifespan. This approach ensures that the financial burden does not disproportionately fall on current taxpayers, but is instead shared more fairly with those who will benefit in the future.

If the project were to be funded wholly from the council tax, rather than a loan, then the council tax for Witney Town Council would increase from £203 to £314 for one year (Band D) an increase of 54%.

## Consultation Questions

1. Are you in favour of improvements to West Witney Clubhouse and the building of a new works depot?

Yes ☐

No ☐

2. Are you in favour of the Town Council taking out a loan of £1,250,516 and repaying the loan over the next 40 years rather than raising the Council Tax significantly for current residents as explained above?

Yes ☐

No ☐

3. How do you use West Witney Clubhouse and grounds?

.....

.....

.....